



# // SIMKON

## BY VANSICHEN

## ABOUT SIMKON BY VANSICHEN

SimKon by Vansichen has been a specialist for linear travelling axes for industrial robots and for workpiece positioning using rotary and rotary-tilting tables since 1998. By individually configuring our standard components to meet the specific demands of our customers, we are able to design and create customised solutions. We therefore place high value on the **quality, precision and continuous optimisation of our products.**

Our solely German design and production activities at our headquarters in Hilchenbach (in the Siegen-Wittgenstein district in the south of the German federal state of North Rhine-Westphalia) are highly appreciated by renowned robot and automotive manufacturers, suppliers, system houses and manufacturing industry companies both in Germany and abroad.

As a provider of **complete solutions**, SimKon not only offers linear axes for articulated robots but also, and in particular, parts for industrial robots, accessories for automated systems and auxiliary equipment for tool positioning and robot assembly.

The company SimKon G. Ziel GmbH was taken over by the Belgian family company 'Vanischen Linear Technology' in 2020 and has since been operating under the name 'SimKon by Vansichen'. The acquisition has enabled the company to expand its product range and offer a multitude of other synergies. The group employs a total of 29 members of staff at two locations: Vansichen Linear Technology in eastern Belgium and SimKon by Vanischen in Hilchenbach, Germany. Both companies offer many years of experience and extensive expertise in the field of robot tracks. "The service and capacity of both companies is sure to continue to grow even more", states Pieter Vansichen.

// QUALITY  
// SERVICE  
// AMBITION  
// EXPERTISE  
// TRUST



Gunther Ziel (Managing Director) and Pieter Vansichen (Managing Director)

# TRAVELLING AXES FOR ROBOTS

Travelling axes for robots by SimKon by Vansichen extend the working area and guarantee the precise linear movement of your robots. We build the basic structure of travelling axes for robots with drive systems.

Our many years of experience have resulted in the successful completion of more than 700 projects and enable us to offer a solution for each of your applications. We offer travelling axes for all kinds of uses: handling, welding, use under clean room conditions etc.



# 7 ADVANTAGES

- When moving across the travelling axis, the robot can work at full capacity.
- Quick and easy assembly.
- Travelling axis parts consist of one piece with a length of up to 12 metres.
- Travelling axes can be connected up to a length of 100 metres.
- Service life of up to 100 000 kilometres.
- High repeat accuracy at a speed of up to 4 m/s.
- We adapt the design to suit our customers' needs.



# FANUC CATALOGUE

A catalogue dedicated to the entire range of FANUC products!



## IN ADDITION TO FANUC, WE ALSO MAKE TRACKS FOR:



KUKA



STÄUBLI



OTHER ROBOTS

# REALISATIONS



FT65



SCAN ME

VIDEO FT65



FT45-CO



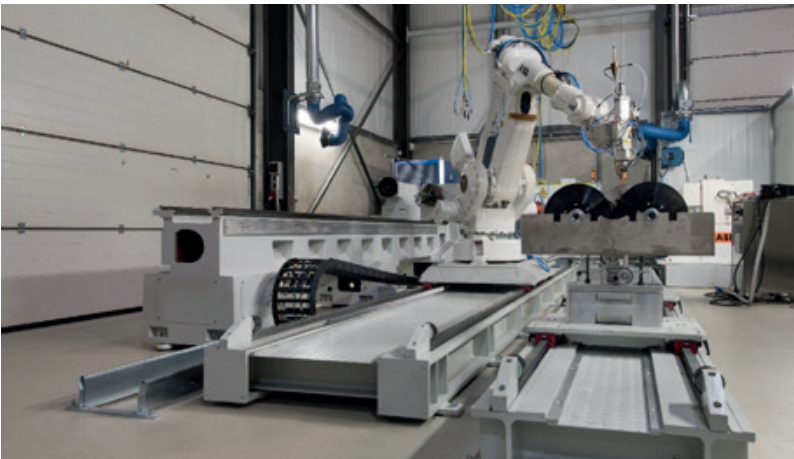
AT35-W



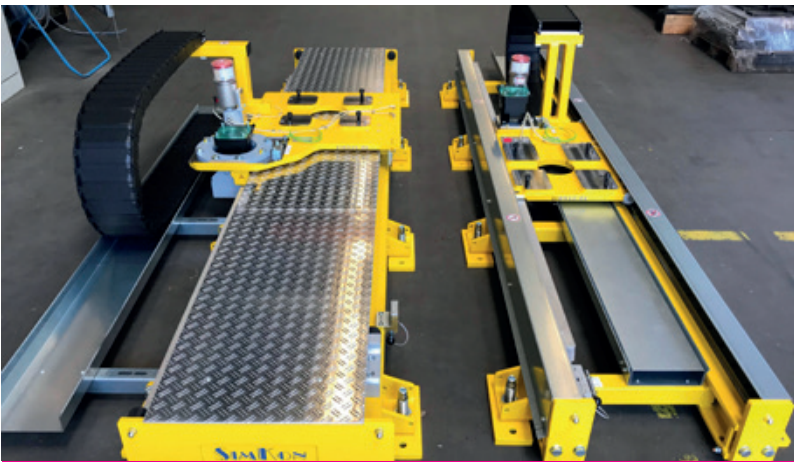
# REALISATIONS



AT35-W



FT45



SRMC-250-3

# REALISATIONS



CUSTOMIZED



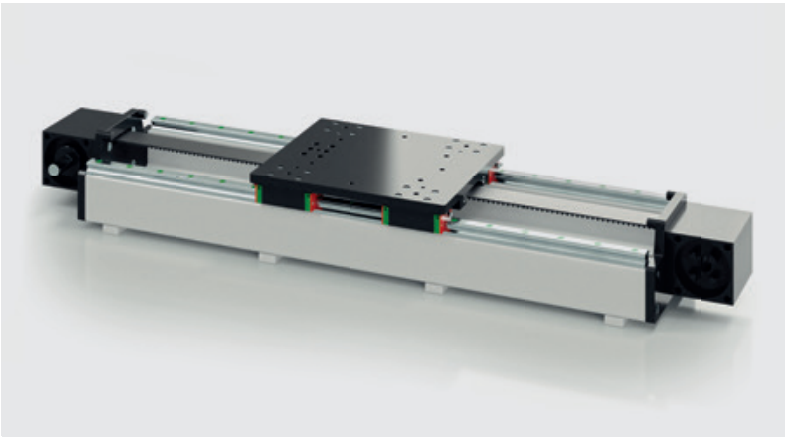
SRMC-SERIE



CUSTOMIZED

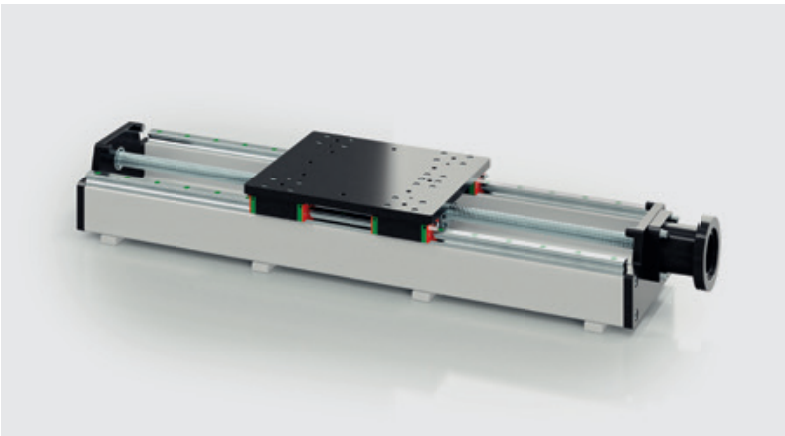


# POSITIONING SYSTEMS



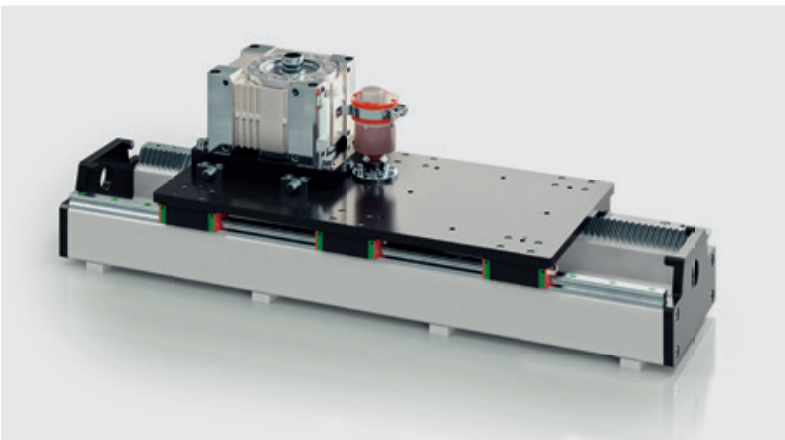
**KK-BD** - HTD belt

| KK-BD                          |
|--------------------------------|
| HTD belt                       |
| Max. length 12000 mm           |
| Adapter and coupling for gears |



**KK-HD** - Ball screw spindle

| KK-HD                                |
|--------------------------------------|
| Ball screw spindle                   |
| Max. length 6000 mm                  |
| Design with protective bellows       |
| Adapter and coupling for motor/gears |



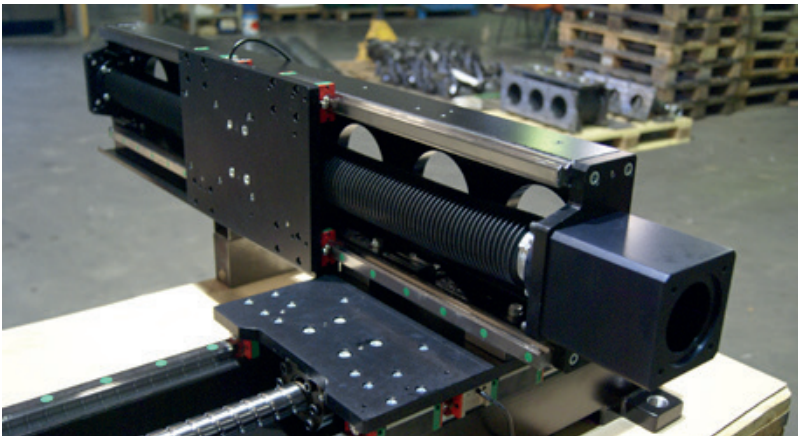
**KK-RP** - Rack and pinion

| KK-RP                           |
|---------------------------------|
| Rack and pinion                 |
| Max. length 12000 mm            |
| High precision rack and pinions |
| Adapter and coupling for motor  |

# REALISATIONS



**KK-BD**



**KK-HD**



**KK-RP**

# SIMKON MULTI-AXIS SYSTEMS

One of the main strengths of SimKon by Vansichen is its ability to create multi-axis systems. An experienced project team and a comprehensive range of standard components form an ideal basis for these systems. SimKon by Vansichen always accompanies its customers throughout the entire project.

We not only handle the mechanical engineering but also the realisation of plans and ideas. Our scope of delivery always stretches as far as reduction gear boxes. Our customers are machine builders and are therefore experts when it comes to motorisation, grippers and tools.

Machined box sections or high-precision platework always form the basis for the construction of our systems. All of our structures are calculated using the finite element method (FEM).

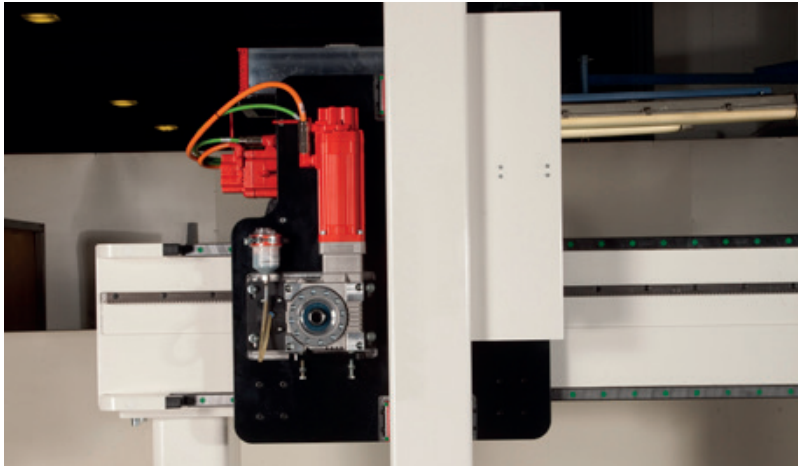
The guideways and drives for the systems are mainly created using Hiwin guideways and Atlanta racks. We are, of course, also able to offer other guideway and drive principles such as running wheel or toothed belt drives.



# REALISATIONS



**AT55-XZ CUSTOMIZED**



**AT35-XZ**



**GANTRY XYZ**





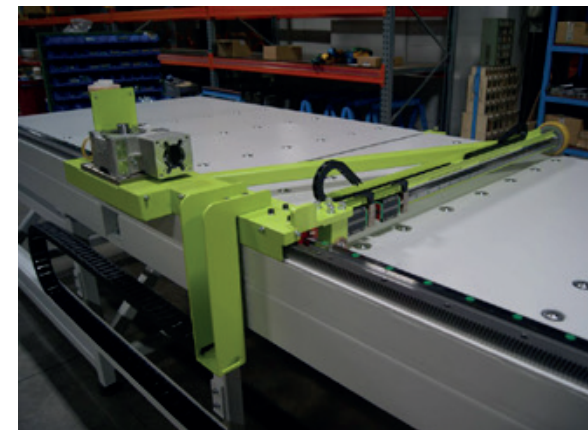
## CUSTOMER-SPECIFIC COMPONENTS AND LINEAR SYSTEMS

Producing customer-specific components and made-to-measure component assemblies is one of the main areas of expertise of SimKon by Vansichen. We develop individual solutions for you based on a high-quality and comprehensive range of linear guides and drive elements.

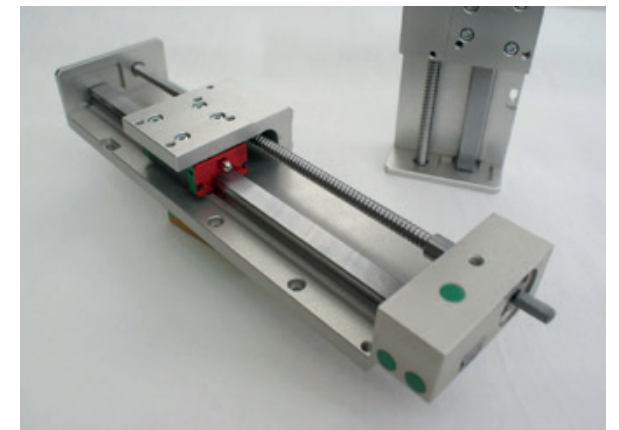
Production, assembly and the inspection of the component assemblies are all carried out by Vansichen Linear Technology. If no standard solutions are available, we rely on our customised linear products and component assemblies.



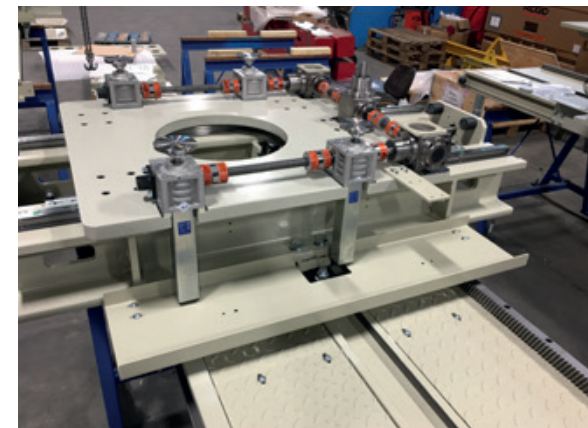
## REALISATIONS



**GUIDETABLE**



**ALUMINIUM TABLE** - Customized



**X-Y-Z** - Positioning system for an extruder



**CUSTOM MADE Z-AXIS**



# ROTARY-TILTING TABLES

Our comprehensive product portfolio of rotary-tilting tables enables individual solutions for partially special conditions, such as Ex-protection areas, cleanroom conditions, aggressive materials or high amounts of dust.

Economic design, efficient automation and highest product quality must not contradict each other – quite the contrary!

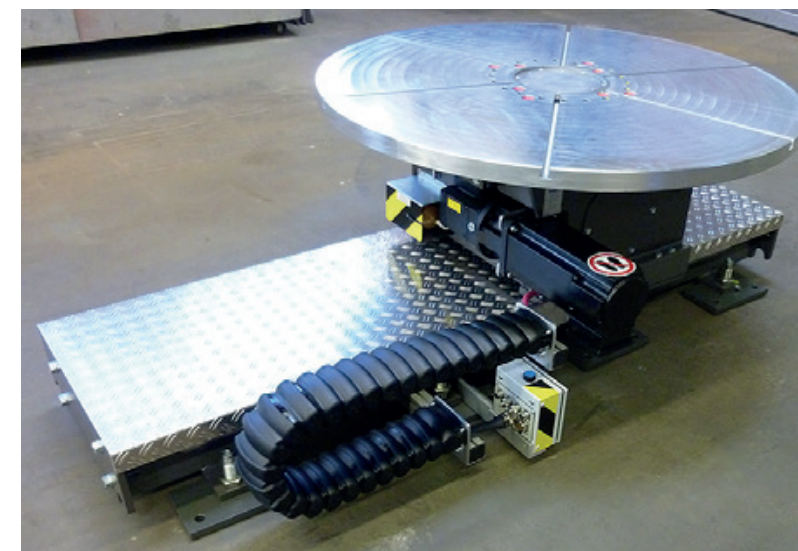
In all of our conception and customer-specific applications we focus on:

- In-house and thus, exclusively German designs and conceptions
- Modern state-of-the-art applications
- Professional drive layout computation
- Robust and statically dimensioned design
- Professional energy chain design
- Sufficiently dimensioned mounting and pivot bearing
- Robust face plates according to customer specifications

All of our products are delivered including CE-conform documentation. Upon request you can receive drawings in 2D and 3D format as well as all descriptions and maintenance schedules as PDF-files and/or on CD ROM. Besides professional on-site assembly and complete service we also offer the option to startup your system at our premises.



# REALISATIONS



## A COMBINATION OF ALUMINIUM AND STEEL

SimKon by Vansichen develops multi-axis linear systems and customised solutions for its customers in cooperation with the German supplier Bahr.

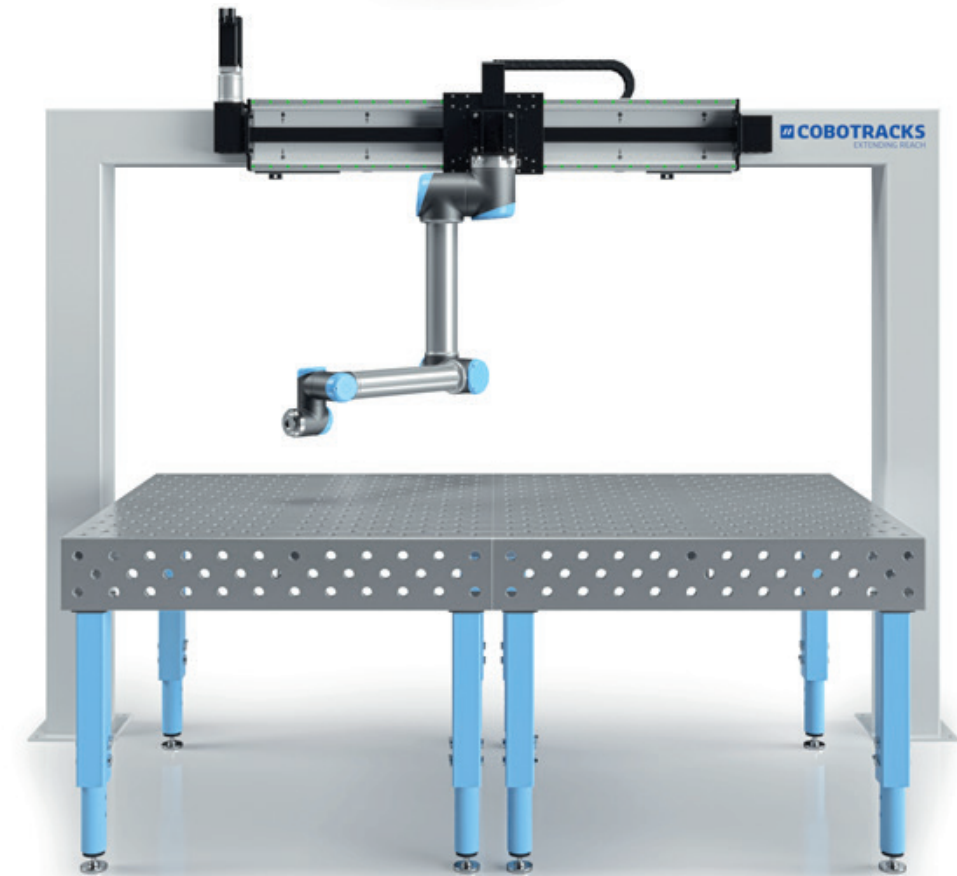
A combination of steel and aluminium is the ideal solution for stability and durability.



## COBOTS

When it comes to cobots, we also provide solutions for extending the reach of cobots with a seventh axis. Our tracks are suitable for Universal Robots (UR+ certified) and Omron TM robots. We can provide you with the entire kit (LMK) or just the axis (LMA).

For comprehensive information on our cobot solutions, visit the Cobotracks website at [www.cobotracks.com](http://www.cobotracks.com)







#### **CONTACT**

FERNDORFSTRASSE 80  
D-57271 HILCHENBACH

**T** +49 2733 6296  
**F** +49 2733 60601

**E** [INFO@SIMKON.DE](mailto:info@simkon.de)  
**VAT** DE 191 925 128